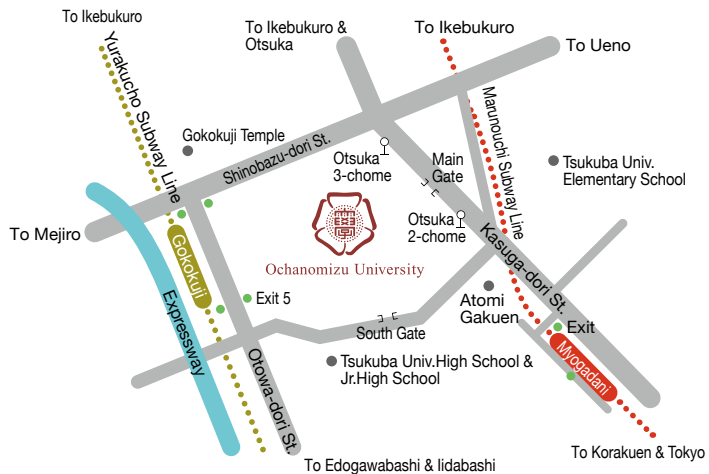
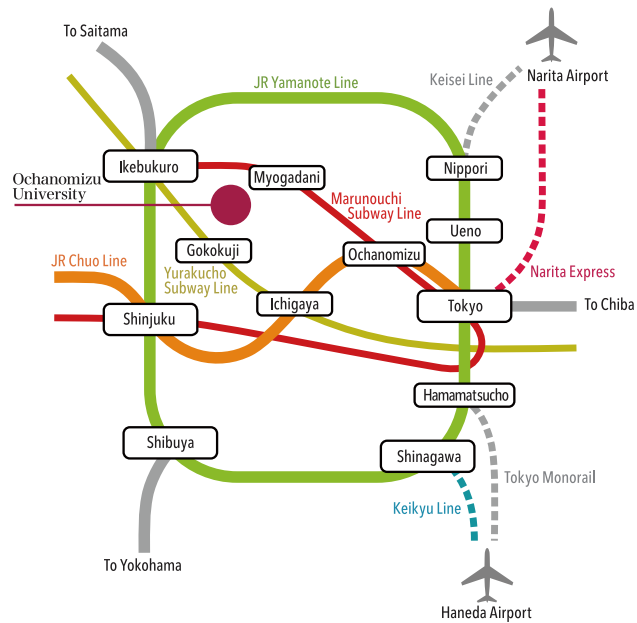


Transport guide

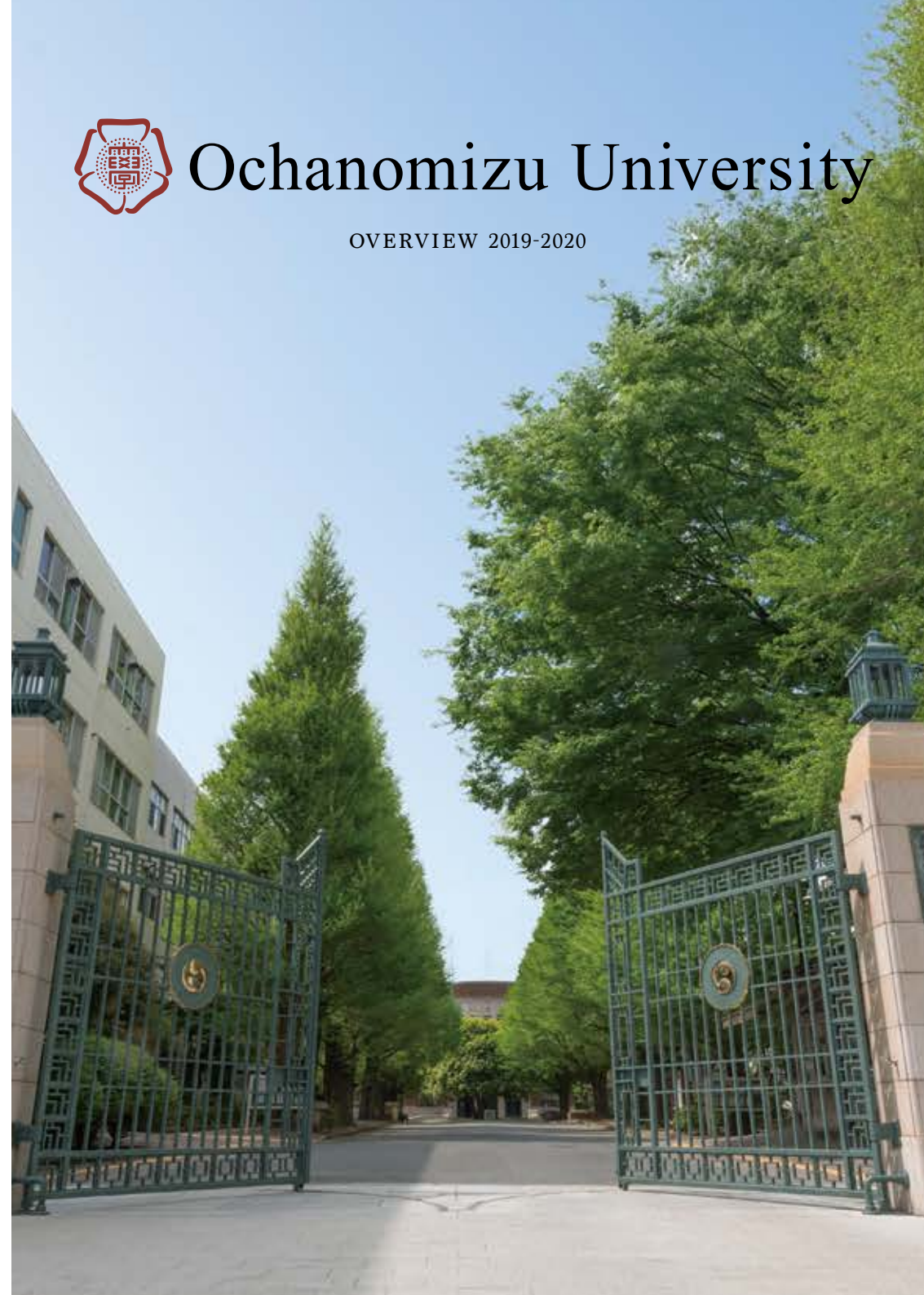


- 7-minute walk from Myogadani Station on the Tokyo Metro Marunouchi Subway Line
- 8-minute walk from Gokokuji Station on the Tokyo Metro Yurakucho Subway Line
- 1-minute walk from Otsuka 2-chome Bus Stop (Toei Bus)



Ochanomizu University

OVERVIEW 2019-2020



Ochanomizu University



2-1-1 Otsuka, Bunkyo-ku, Tokyo, Japan 112-8610
 TEL. +81-3-5978-5105 FAX. +81-3-5978-5545(Public Relations)
<http://www.ocha.ac.jp/>

Ochanomizu University's History

Ochanomizu University was established in 1875 as Tokyo Women's Normal School, in Ochanomizu (now Yushima, Bunkyo-ku, Tokyo). Since its founding, Ochanomizu University has educated many eminent researchers and educators, including Tetsu Yasui, the president of Tokyo Woman's Christian University, Kono Yasui, the first Japanese woman to earn a doctorate in science, and Toshiko Yuasa, the internationally renowned physicist.

Ochanomizu University was established as a women's university in 1949 as part of the post-war school reforms. The following year, the University launched a new system consisting of a Faculty of Letters and Education, a Faculty of Science, and a Faculty of Home Economics (now the Faculty of Human Life and Environmental Sciences). Subsequently, a graduate school was established in 1963, followed by a doctoral program in 1976, as the University established its educational and research foundations while continuously expanding and developing.

Ochanomizu University celebrated the 140th anniversary of its founding in 2015. Just as it has up until this point, it will continue to serve as a pioneer in educating women who lead the way in every era.

1874	The government establishes Women's Normal School in Tokyo, Japan's first institute of higher education for women	
1875	The school opens in Ochanomizu (now Yushima 1-chome, Bunkyo-ku, Tokyo)	
1908	The name changes to Tokyo Women's Higher Normal School with the establishment of the Nara Women's Higher Normal School	
1923	The school buildings were destroyed in fires caused by the Great Kanto Earthquake. The school moves to new buildings at the present location (Otsuka 2-chome, Bunkyo-ku, Tokyo)	
1949	Ochanomizu University was established	
1963	The Graduate School of Home Economics (master's program) was established	
1964	The Graduate School of Science (master's program) was established	
1966	The Graduate School of Liberal Arts and Humanities (master's program) was established	
1976	The Graduate School of Humanities and Science (doctoral program) established	
1997	The Graduate School of Liberal Arts and Humanities, Sciences, and Home Economics (master's programs) was reorganized as the Graduate School of Humanities and Science (master's program)	
2004	Ochanomizu University becomes a national university corporation under the National University Corporation Law	
2007	The Graduate School of Humanities and Sciences was reorganized as the Graduate Courses in Humanities and Sciences	

The University's front gate

Kiindo lecture hall



A Panoramic view of school buildings prior to the Great Kanto Earthquake

Greeting

Ochanomizu University, established in 1875 as Japan's first national higher educational institution for women, has carved a history that spans over 140 years. Over this period, the University has been a pioneer at the forefront of education for all women who are motivated to learn and want to contribute to society. Many of our graduates have produced outstanding results domestically and internationally in various disciplines, including academic research, education, industry, public administration, and journalism.

Today, the University is working to train women to gain a broad perspective and sensitivity who, in response to the needs of society, will be able to work for the future of the world.

In 2004, Ochanomizu University articulated its mission to "be a place where all women who are motivated to learn can realize their earnest dreams", as it transitioned to a national university corporation. Thus, the University aims to support the realization of the dreams for such women, and up to the present day, we have developed programs to support the growth and development of qualities and capabilities for women, regardless of their nationality and age, including women in developing countries who are motivated to learn but may lack opportunity to study.

Furthermore, the University has subsequently created a distinctive system of education that includes liberal arts education, global education, and leadership education to provide an arena of self-improvement that enables women to learn what needs to be done for the good of the world and humanity. It is our hope that, through such experiences, those who study at our University will acquire: (1) the ability to be aware of complex and diverse social issues and reflect on methods of exploration and problem-solving from their respective specialist viewpoints; (2) the ability to profoundly understand people from diverse cultures who have different values and philosophies, and mutually learn from those who have different lifestyles, while also growing as an individual; and (3) the ability to achieve cooperation with a diverse range of people from around the world through comprehensive and practical "wisdom" without forgetting about consideration for others.

Ochanomizu University will continue to play a role for years to come as a distinctive higher educational institution that aims to improve and innovate education and research, while also encouraging them to be women of action who evoke hope and courage for the future in their colleagues and the broader society.

Kimiko Murofushi

Kimiko Murofushi, Ph.D.
President, Ochanomizu University



Ochanomizu University's mission, vision and strategy

Raise female leaders who can respond to the different needs of the times and society and who can make an impact on the global stage, by providing learning opportunities to help promote international research, create educational cultures, and realize women's dreams.

The above is the mission of Ochanomizu University as a national women's university. In order to achieve this mission, we uphold the following visions during the period of our third medium-term goals (from 2016 to 2021) and promote various strategic measures in such fields as education, research and social contribution.

Vision 1

Raising global female leaders with a high level of specialization, an insight with sound judgment, and a tolerance of diversity

Vision 2

Creating an invigorating social environment through research and development for life-long health and spiritual wellbeing



Education Reform (To raise global female leaders with a high level of specialization)

Introduction of learning tracks integrating the master's program and doctoral program

An educational system that integrates the master's program and doctoral program, together with our ongoing "Liberal Arts in the 21st Century" program and "Multiple Program Elective Course" system, helps raise global female leaders.

Raising female leaders in the fields of science and technology

Ochanomizu University has adopted a five-year educational system that integrates the master's program and doctoral program in order to foster long-term innovation by female leaders. It is also the first women's university to establish the joint doctoral program of a Cooperative Major in Human Centered Engineering.

Educational quality assurance system

This includes the formation of comparative IR (Institutional Research) on learning and teaching practice, the development of a learning portfolio that integrates senior high school, university, and graduate school.

Research Promotion (Formation of international educational research bases in competitive and distinctive fields)

Research Organization for Global Female Leader Development

Raise female leaders capable of performing on the global stage through educational research that helps promote women's leadership and gender equality.

Organization for Human Life Innovation and Development

Create innovation designed to promote physical and mental health and living environments in line with human "body" and "mind" development stages.

Internationalization (Promoting international exchange with overseas universities and student exchange programs)

Improving educational environments for globalization

Increase the number of overseas partner universities, create a more flexible academic calendar in part by modifying the four-term system, offer more classes in foreign languages, and set up English-taught degree courses.

Contribution to international society

Implement support programs for the education of women and children in developing countries, and foster human resources for peacebuilding and international cooperation.

University Administration (Strengthening functionality through an "All Ochanomizu" system)

Strengthening financial footing

Establish "Future Exploration Fund." Promote active measures to attract external funds.

Improving campus functionality

Realize an attractive campus based on the "Campus Master Plan". Set up "Hisao&Hiroko TAKI PLAZA" as a base for international exchanges, social collaboration, and other interactions.

Social Contribution (Contribution to society by making use of educational research outcomes)

Promotion of lifelong education

Hold "Ochanomizu Business Leader Development Class" ("Kiin Juku") to help women to take their careers to the next level and increase the number of women in high-level positions.

Support for science education

Provide training for science teachers at, and send science teachers to elementary, junior high and senior high school, and hold open courses for the general public. Promote measures designed to increase the number of female science students.

Provide early childhood education and childcare services

Operate a nursery school, "The center for Early Childhood Education and Care," in partnership with Bunkyo-ku, in order to return to society the fruits of our education research activities on early childhood education and childcare, as well as to reduce the number of children waiting to get into nursery schools.

Support for regions damaged in earthquakes

Establish an education system that continues functioning even when struck by disasters, to disseminate and deploy science educational content to the disaster-stricken areas.

Ochanomizu University's unique baccalaureate degree program educates women with knowledge, insight, and tolerance

Ochanomizu University has developed a baccalaureate degree program that prepares women with specialized basic skills, giving them creativity and practical capacities. The "Liberal Arts in the 21st Century" program, which provides a deep and comprehensive understanding in the fields of humanities and natural and social sciences, was introduced under the liberal arts education program, while the "Multiple Program Elective Course" system, which grants students more independence, was adopted for specialized education. This is intended to give students the education and expertise required in the 21st century society and to develop female leaders with an independent spirit. Ochanomizu University is also focusing on raising human resources prepared to make an impact on the global stage.

Undergraduate Faculties

(The number in the () for the admissions capacity and total in 2018 indicates the fixed quota of students entering in the third year, which are not included. The current number of students is as of May 1, 2018.)

	Admissions Capacity	Total	Current
Letters and Education	202 (10)	808 (20)	932
Liberal Arts and Humanities	55	220	251
Languages and Culture	80	320	382
Human and Social Sciences	40	160	183
Performing Arts	27	108	116
Global Studies for Intercultural Cooperation			
Science	125 (10)	500 (20)	567
Mathematics	20	80	98
Physics	20	80	94
Chemistry	20	80	95
Biology	25	100	109
Information Sciences	40	160	171
Human Life and Environmental Sciences	125 (10)	500 (20)	554
Nutrition and Food Science	36	144	154
Human-Environmental Sciences	24	96	104
Human Life Studies	39	234	269
Psychology	26	26	27



Ochanomizu University set up the Child Studies and Psychology course in 2018

In the Faculty of Letters and Education, the university has set up a Child Studies course in the Department of Human and Social Sciences; it offers comprehensive education in practical child-rearing at actual infant education facilities, and teaches theory that probes the various issues concerning children. It has also set up the Department of Psychology in the Faculty of Human Life and Environmental Sciences to cultivate Scientist - Practitioners through systemized and phased study combining theory and practice.

Liberal Arts in the 21st Century program

This program, primarily offered to first- and second-year students as part of their liberal arts education, is assembled from five themes that are the key to unlocking the modern world. The objective is to systematically help students develop outstanding communication and negotiation skills, a broad perspective, and the ability to make judgments in a changing world—all which are vital skills for supporting and ensuring the optimal utilization of a highly specialized education. This gives students a perspective that cuts across the humanities and sciences, and fosters fundamental skills that will support them in society.

Multiple Program Elective Course system

In this specialized education course, students systematically acquire expertise and the knowledge and techniques needed to exercise this skill. Students are given greater independence in building an academic program that is in line with their own objectives. By combining core programs, specialty programs, subprograms and interdisciplinary programs, students can not only delve into specialized areas, but can also extend their learning across multiple fields and take a more interdisciplinary approach.

Integrated education tracks for baccalaureate and master's degree programs

In the academic year of 2017, Ochanomizu University introduced "integrated education tracks"—a curriculum that connects the baccalaureate degree programs and the master's degree programs in some divisions, in order to foster the sophisticated ability to think based on education and specialization that can meet the needs of society. Guidance on the integrated education tracks will be provided for the first and second-year undergraduate students, and the application and selection process will start for third-year undergraduate students who are interested or motivated to participate. Students selected for participation in the integrated education tracks can proactively take graduate level classes while still enrolled in the baccalaureate degree program. Students who are planning to advance to the master's program in the future can therefore take full advantage of this system to make their six years of campus life even more worthwhile.

"Women's power for the world"

Ochanomizu University offers foreign language courses under the ACT (Advanced Communication Training) Program, which aims to improve communication skills, interdisciplinary courses that are open to society, and other practical training courses, in order to develop women who think from a global perspective and are able to play an active role both domestically and overseas. These courses are designed to foster an international perspective, the ability to understand other cultures, and the ability to communicate.

The entire university is committed to promoting study abroad, as well as upgrading and expanding overseas fieldwork and internship opportunities. Ochanomizu University also holds various workshops, and runs a summer program for international students from overseas and university students to learn together.

Graduate education to attain a high level of specialization and a panoramic perspective

The Graduate School of Humanities and Sciences pioneers new research fields that go beyond the specialties of humanities and the sciences in order to foster the creative capacity needed to carry out advanced, cutting-edge interdisciplinary research. The Graduate School has focused on educating female researchers since it was established, and it has produced many talented female researchers.

We are also considering adopting an educational system that integrates the master's program and doctoral program in order to give our students a greater panoramic perspective, to stimulate their creativity, and to foster leaders capable of performing on the global stage. Accordingly, we are pursuing a graduate education incorporating a wide range of education and research projects.

Humanities and Sciences

Master's Program	
Comparative Studies of Societies and Cultures	Japanese Language and Literature / Asian Languages, Literatures, and Cultures / English and French Languages, Literatures, and Cultures / Applied Japanese Linguistics / Philosophy / History and Art History / Culture and Historical Studies / Dance / Music
Human Developmental Sciences	Educational Science / Psychology / Developmental and Clinical Psychology / Applied Sociology / Child Studies
Gender and Social Sciences ※	Social and Family Policies / Geography and Environmental Studies / Gender and Development Studies
Life Sciences	Biological Sciences / Human Environmental Sciences / Food and Nutritional Sciences / Genetic Counseling
Advanced Sciences	Mathematics / Physics / Chemistry and Biochemistry / Computer Science
Cooperative Major in Human Centered Engineering	
Doctoral Program	
Comparative Studies of Societies and Cultures	Japanese Studies from a Global Perspective / Language, Literature, and Culture / Comparative Social Studies / Arts and Representational Studies
Human Developmental Sciences	Educational Science / Psychology / Developmental and Clinical Psychology / Sociology and Social Policies / Child Studies
Interdisciplinary Gender Studies	Interdisciplinary Gender Studies
Life Sciences	Biological Sciences / Human Environmental Sciences / Food and Nutritional Sciences / Genetic Counseling
Advanced Sciences	Mathematics / Physics / Chemistry and Biochemistry / Computer Science
Cooperative Major in Human Centered Engineering	

※ Gender and Social Sciences abolishes 3 courses from 2020, and instead we plan to establish a gender social sciences course.

Research and education support programs at graduate school

We have a substantial scholarship program. In addition, we have supported students' research and education by establishing the affiliated Izumi Nursery School (see p. 18).

The curriculum includes subjects such as English academic writing and presentation skills that will prepare students for presentations at international seminars, career development, and global female leadership training. The career support programs are intended to provide an environment in which students can continue their research. These programs include the research fellow program, researcher program and Migakazuba researcher program.

Establishing of new joint doctoral program in Cooperative Major in Human Centered Engineering

There is currently an extreme shortage of female human resources in science and engineering, and the development of women with advanced knowledge of science and engineering is a pressing challenge. Ochanomizu University and Nara Women's University have jointly established the new Cooperative Major in Human Centered Engineering in 2016.

It aims to cultivate outstanding female talent with a science-based education, who can utilize engineering methodology to resolve lifestyle-related issues from a consumer-based perspective, and help create a safe, secure and prosperous society and way of life of the future. In this new Major, students conduct joint research and development programs with companies, such as developing IoT-based real time walking monitoring devices and rolling out health support services.

Distinctive Education Programs

Minor Course Programs

These are interdisciplinary programs that include the following: Gender Equality Resource Program to equip students with the skills to help realize a gender-equal society; Core Science Teacher Program for cultivating all-round science-based talent who can supervise child students, guide experiments and freestyle research, develop teaching materials, and conduct teacher training; Japanese Culture Program to promote a deeper and broader understanding of a diversity of Japanese culture and Japanese ways of thinking; Shokuiku Program for the early development of highly-skilled experts with extensive expertise and practical skills in food from an interdisciplinary basis.

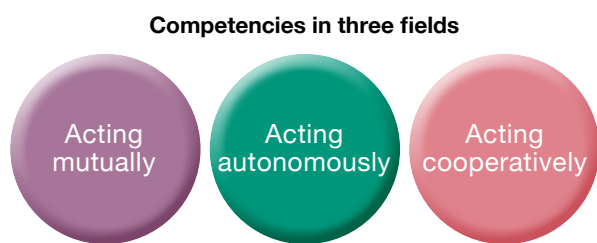
Career Minor Courses

These courses are for students who have completed a master's program and are wishing to join the workforce. They include the following three career minor courses: a Teacher Course to train teachers who can continue life-long education in the pursuit of better education; a Civil Servant Course for turning out talented individuals who can make a difference in society on a public level by applying extensive practical knowledge and perspectives required for working in administration, and possessing a sense of ethics; an Industry-Academia Course to develop leaders in society who will bring about innovation and build ecosystems through industry-academia-government collaborations.

Unique career design program giving students practical and vocational skills needed in the real world

[Career education]

This program develops competence (comprehensive capacity producing results in conjunction with knowledge and skills) in the three areas essential to extending learning at the University and creates a cornerstone for career design. Students practice project-based learning that addresses specific issues of social relevance, giving them a window through which to view the world.



- Acting mutually:** communication skills, knowledge and cognitive skills, ICT utilization skills
- Acting autonomously:** self-management skills, planning and execution skills, sociability
- Acting cooperatively:** relationship building skills, collaboration skills, leadership skills

[Support for job hunting]

The Student and Career Support Center provides students with school-wide support throughout their progress as students and in their job search in order to support them to succeed in today's competitive employment environment.

To address the diverse needs of students, the center runs a variety of events to assist with job hunting. This assistance includes career guidance, informal meetings with former students, joint information sessions, and workshops. In addition, expert career advisors offer counseling for all those who are job hunting.



Results in job searches in fiscal 2018

	Number of graduates	Number of students continuing education (percentage)	Number of students seeking work (percentage)	Number of students who have found work (percentage)	Other (percentage)
Letters and Education Science	232	33(14%)	181(78%)	177(98%)	22(9%)
Human Life and Environmental Sciences	134	86(64%)	47(35%)	45(96%)	3(2%)
Total	500	152(30%)	316(63%)	307(97%)	41(8%)

Various scholarships provided by the University for financial support and learning encouragement

Ochanomizu University provides various types of scholarships as part of financial support and learning encouragement for students. These scholarships carry no repayment obligation, including pre-admission scholarships and scholarships targeting those who have shown notable achievements in their respective fields.

[Example] (As of December, 2018)

Entire University			
	Name of Scholarship	Amount of Scholarship	Number of Grantees
Undergraduate Students	Migakazuba Scholarship (Pre-admission scholarship)	600,000 yen (300,000 yen/year)	20
	Undergraduate Scholastic Achievement Scholarship	100,000 yen	25
	Ouinkai Scholarship	200,000 yen	4
	New Dormitory Resident Assistant Scholarship (SCC-RA Scholarship)	240,000 yen (20,000 yen/month)	4
Graduate Students	Ouinkai Research Encouragement Award (Pre-admission scholarship)	200,000 yen (100,000 yen/year)	20
	Graduate Student (Doctoral Program) Scholarship Fund (Pre-admission scholarship)	300,000 yen (100,000 yen/year)	10
	Chisae Nishikori Scholarship Fund (Pre-admission scholarship)	500,000 yen	2
	Hiroko Takata Scholarship Fund (Pre-admission scholarship)	500,000 yen	Master 1, Doctoral 2
	KSP-SP Scholarship Fund (Pre-admission scholarship)	500,000 yen (250,000 yen/year)	3
	Ochanomizu University 120th Anniversary Commemorative Program International Exchange Encouragement Award Fund (Support for international students and Asian female researchers)	Limited to 2,000,000 yen	(International) 1-2 (Asia) A few
Undergraduate / Graduate Students	Ochanomizu University 140th Anniversary Study Abroad Support Scholarship	50,000 yen	120
	Fumi Tominaga Scholarship Fund	300,000 yen	1
	Avanade Scholarship Fund (Pre-admission scholarship)	Undergraduate Student 1,000,000 yen Graduate Student 500,000 yen (250,000 yen/year)	Undergraduate 3 Graduate 4
	Childcare Assistance Scholarship	In principle, half of the nursery school fee	No restriction

Faculty/division, etc.			
	Name of Scholarship	Amount of Scholarship	Number of Grantees
	Yasai-Kuroda Scholarship Fund	30,000 yen	5
	Clothing Science Scholarship Fund	100,000 yen	No restriction
	Food Science Scholarship Fund	100,000 yen	A few
	Home Management Scholarship Fund	100,000 yen	1 or 2
	Graduate School Scholarship Fund	100,000 yen	2
	Mayako Ikeda Memorial Scholarship Fund	200,000 yen	A few
	Tadashi Ikeda Scholarship Fund	200,000 yen	A few
	Toshiko Yuasa Special Researcher Scholarship Fund	Master's program 800 euro Doctoral program 1,100 euro	1
	Mathematics Scholarship Fund	100,000 yen	1
	Outstanding Student in Biology Scholarship Fund	20,000 yen	1
	Global Studies for Intercultural Cooperation Scholarship Fund	20,000 yen	1 or 2
	Department of Chemistry (Naomi Miyajima) Scholarship Fund	100,000 yen	Science 2, Master 2, Doctoral 1
	Department of Biology (Eiko Konuma) Scholarship Fund	Up to 500,000 yen	1
	Kazuko Takemura Overseas Training Scholarship Fund	1st year 2,000,000 yen 2nd year 1,000,000 yen	1
	Kazuko Takemura Scholarship Fund	50,000 yen	1
	Satoko Kan Scholarship Fund	250,000 yen	1 or 2
	Yoshisada Yabe and Aiko Yabe Scholarship Fund	500,000 yen	3 for botany and mathematics respectively
	Physical Geography Scholarship Fund	20,000 yen for domestic research or 40,000 yen for overseas research	3

Research promotion by strategic organizations integrating competitive and distinctive fields

Ochanomizu University has established two new organizations working to promote greater research, namely the “Research Organization for the promotion of Global Women’s Leadership” and “Organization for Human Life Innovation and Development” as a step toward realizing the visions for our third medium-term goals and plans. These two organizations consist of two institutes that promote distinctive research.

Research Organization for the promotion of Global Women’s Leadership

Formation of international educational research bases to raise global female leaders

Invite domestic and overseas female researchers, and raise female leaders capable of performing on the global stage through research and education that contribute to the promotion of female leadership and gender equality.

Research content

Expansion of the international network

- Invite overseas female researchers with achievements in priority areas for research and fundamentally reinforce research and education functionality
- Expand collaboration with domestic and overseas organizations to function as a bridge between Japan and the world

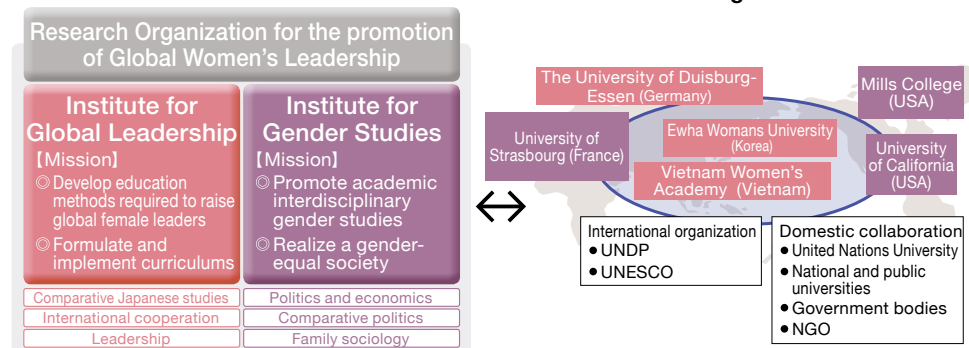
Disseminate a new view of global female leadership

- Promote international joint research related to priority areas for research
- Propose a “New Asian View of Leadership”
- Construct a “New Global Female Leadership Theory”

Practice of leadership education

- Develop “Leadership Education Performance Index” to provide feedback to the practice of education

Joint research with domestic and overseas research organizations



Prime Minister of Norway visits Ochanomizu University

The Prime Minister of Norway, Erna Solberg, visited Ochanomizu University in February 2018 to sign the Ochanomizu University and the Norwegian University of Science and Technology Academic Cooperation Agreement for promoting gender research between both universities. The Prime Minister gave a speech to students from Ochanomizu University and its affiliated senior high school, in which she discussed the participation of women in politics, leadership and other topics.



Organization for Human Life Innovation and Development

Formation of international educational research bases in the fields of health science and human developmental sciences

Disseminate the fruits of research to society in order to create innovation designed to bring lifelong physical and mental wellbeing and improve living environments, transform Japan into a healthy and vibrant country, and reduce the burden on future generations.

Research content

Research and development for maintaining and improving physical and mental health from infants and preschool children to elderly people

- Research and development that helps promote health in terms of nutrition intake, eating habits, exercise and artistic activities
- Prevention and improvement of stress disorders and the locomotive syndrome

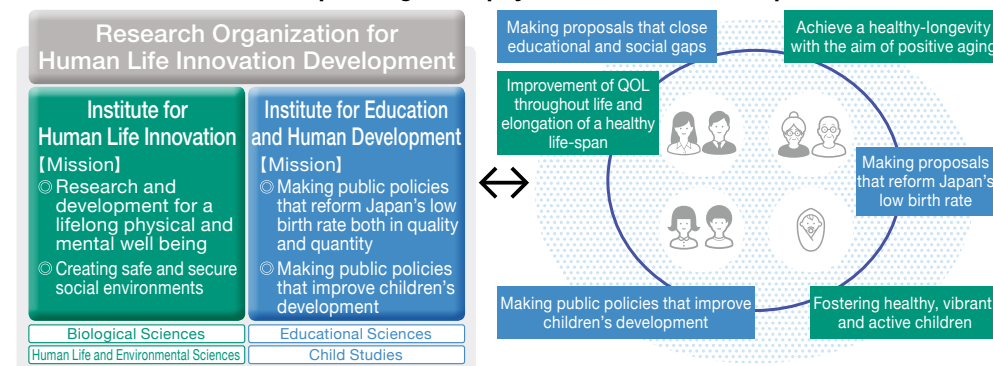
Conducting research and developing education curriculums that aim to enhance the quality of childcare and close educational gaps

- Studies on childcare environments and educational gaps, and long-term follow-up studies related to child-rearing environments and child development
- Studies related to parenting and work-life balance
- Studies related to social gaps for people in their middle and old ages

Development of “Health Support and Education Program” and practical studies

- Development of different programs based on age levels in the three fields of developmental disabilities, stress disorders, and lifestyle-related diseases.

Research incorporating both “physical” and “mental” aspects



Other centers supporting education and research

Headquarters for Campus Educational System Reform		Center for Institutional Research, Educational Development, and Learning Support Center for Foreign Language Education Leading Graduate School Promotion Center
Headquarters for International Affairs		Center for International Education Global Collaboration Center
Headquarters for Research and Innovation	Research Advancement Division	Education and Research Department Center for Soft Matter Physics Center for Simulation Sciences and Informational Biology
	Social Collaboration Division	IT Center Center for Instrumental Analysis Radioisotope Research Center Institute of Experimental Animal
	Research Innovation Department	Marine and Coastal Research Center Science & Education Center Life-World Watch Center
Headquarters for Promoting Global Human Resource Development and Gender Equality		Liaison and Research Administration Center Students and Career Support Center

Deepening ties with universities around the world through student exchange agreements

University offers student exchange programs, foreign language training and many overseas visit programs, and supports overseas studies at the University's partner universities.

Partner universities : 79 in 28 countries and regions (as of December 2018)

Region	countries and regions	partner universities
Asia	6	27
Middle East	2	2
Africa	1	2
North America	2	11
South America	1	1
Oceania	2	3
Europe	14	33
Total	28	79



Overseas language and other programs

- Monash University (Australia)
- University of Otago (New Zealand)
- University of Hull (UK)
- The University of Manchester (UK)
- Ewha Womans University (Korea)
- Sookmyung Women's University (Korea) and others

Accepting international students from around the world

Ochanomizu University accepts students from all over the world, primarily graduate students, including exchange students from its partner universities.

Number of international students by home country and region: 35 countries and regions (as of May 1, 2018)

Region	Undergrads	Grads	Research Students (Undergrads)	Research Students (Grads)	Exchange Students (Undergrads and Grads)	Japanese studies students	Total
Asia	9	127	20	0	5	17	178
Middle East	0	3	1	1	0	1	6
Africa	0	1	0	0	0	0	1
North America	0	0	0	0	0	1	1
Central and South America	0	0	0	0	1	0	1
Europe	5	8	1	6	2	9	31
Total	14	139	22	7	8	28	218

Support programs and events for international students

- Tuition exemptions and postponement system
- Personal tutors
- Dorm mentors
- Tutors at consultation rooms
- International Day
- Summer Programs
- Japanese culture classes
- Kabuki appreciation classes
- International Festival Night



Wide-ranging interaction in Japan

List of exchange partner universities in Japan

- Nara Women's University
- Tokyo Institute of Technology
- The University of Tokyo
- The Graduate University for Advanced Studies
- Japan Women's University
- Nagoya City University
- Tokyo University of the Arts
- Chuo University
- Kyoritsu Women's University
- Tokyo Women's Medical University
- Tokyo University of Foreign Studies
- Tokyo Medical and Dental University
- Tokyo Metropolitan University
- Gakushuin University
- Kitasato University
- Tokyo University of Marine Science and Technology
- Hitotsubashi University
- University of Tsukuba
- Shibaura Institute of Technology
- Keio University
- INSTITUTE of INFORMATION SECURITY
- WASEDA University

As of December, 2018 (in order of date on which agreement was signed)

Community interaction

Ochanomizu University hosts public lectures for community residents and also provides educational support and assistance with educational guidance to elementary, junior high, and high schools in Tokyo or neighboring prefectures.

The University has also formed mutual cooperation agreements and provides educational support with Bunkyo and Kita wards, and Kawaguchi city, the neighboring municipalities.

The University also has a mutual cooperation agreement with Tateyama City in Chiba, where the University's Marine and Coastal Research Center is located, and it cooperates with educational activities.

Support for reconstruction of regions damaged in earthquake

Ochanomizu University has formed comprehensive partnership agreements with the school boards in prefectures, towns, and cities that were damaged in the Great East Japan Earthquake and the Kumamoto Earthquake. Through these agreements, it is aiming to educate children and contribute to the restoration and development of the local communities, as it continues to work on a range of initiatives. The University is training science teachers and offering classroom assistance, such as running on-demand classes and developing and providing materials for conducting and observing science experiments even with the limited resources available at elementary and junior high schools in disaster-affected areas, where it is difficult to do these classroom activities. It has also partnered with school boards and schools nationwide to create classrooms where students can continue to conduct and observe experiments even if a disaster hits the area. In addition to these activities, Ochanomizu University has also been providing emergency support to disaster-affected areas including the towns and cities in Western Japan that incurred extremely heavy rainfall in July 2018, and to areas damaged by the 2018 Hokkaido Eastern Iburi Earthquake.

Support for women

Ochanomizu University has formed a mutual cooperation agreement with Fukui Prefecture to train female leaders. To help Fukui Prefecture establish the Bright Future Program from fiscal 2012, the University used its expertise in training female leaders to help develop a program to help women working in companies in Fukui Prefecture to take their careers to the next level.

In January 2017, it formed an agreement with Bridgestone Corporation to facilitate cooperation in training female leaders, and in April 2019 it launched the Future Origin Project based on this agreement. In October 2018, the University set up courses on social collaboration and promoting female participation; through these courses, it is working with partner companies and students to encourage the active participation of women by identifying and addressing relevant issues.

Promoting gender equality across the University

Ochanomizu University established the Support Office for Women in April 2004, and the Office of Promoting Gender Equality in April 2011; through these offices, we are promoting gender equality in the University's role as an educational and research institution. Under the leadership of the University's president, it pursues improvements to the working environments in education and research institutions. The support program for female researchers at Ochanomizu University is called the Career Opportunity Support Model from Ochanomizu Scientists (COSMOS), and it has a pervasive influence both within and outside the University.

Furthermore, Ochanomizu University considered and reviewed methods for creating working environments that would be conducive to performance in education and research institutions based on the achievements and expertise in developing female workers that the University has built up over more than 140 years since its founding. It has designed the "Ochadai" Index as a self-assessment indicator for the working environment. The COSMOS Work Book was also put together as a compendium of procedures for improving the working environment using the "Ochadai" Index, and it is shared not only throughout Japan, but also with overseas education and research institutions.

Ochanomizu University's initiatives have been widely praised in Japan and abroad, and the University has received many inquiries and visitors from outside organizations.

Raising female leaders on the principles of thoughtfulness, intellect and flexibility, and promoting diversity



Ochanomizu University's 143 years of achievements in higher education for women drive its continuing efforts to develop female leaders. In 2008, the University established the "Migakazuba Bible" based on the school song, "Migakazuba." The Migakazuba Bible lays out the principles behind the University's leadership education, and it is used to develop and propose the unique "Ochadai" model of leadership education. As a part of this model, in 2014 the University established the lifelong learning course, "Ochanomizu Business Leader Development Class" ("Kiin Juku") for women who are aiming to work in management positions.

Also, since fiscal 2010, Ochanomizu University has been providing support to university researchers and their spouses during maternity/childcare leave, as well as to researchers caring for or nursing family members. This is part of the University's efforts to create a working environment that enables its employees to access a diverse range of work styles. These initiatives are being recognized and appraised, and in 2018 Ochanomizu University received the Tokyo City Women's Participation Promotion Award (Education Division). The University will continue to provide a working environment where diversity is valued, and propose a new model of work-life balance for the 21st century.

Education from childhood to graduate school on a single campus

Ochanomizu University houses a kindergarten, elementary school, junior high school, senior high school, university and graduate school, all on a single campus. We are also the first national university corporation to have an affiliated nursery school (Izumi Nursery School) and employee housing within the school.

The University provides an environment oriented to women's lifestyles so they can balance childcare with study, research, education and work to achieve a work-life equilibrium.

Hisao & Hiroko TAKI PLAZA

In March 2019, Ochanomizu University opened Hisao & Hiroko TAKI PLAZA as a center for students to gather and take part in the three "exchanges" of international exchange, community contribution, and intergenerational interaction (between alumnae/alumni associations, teaching staff and students). Construction of the plaza began in May 2018, and it was completed thanks to support from many people including teaching staff and donations from Hisao Taki (Founder of Gurunavi, Inc. and NKB Inc., and Special Advisor to the President of Ochanomizu University) to the Future Exploration Fund and from alumnae/alumni associations (Ouinkai, Sakurakai, Kyoueikai, Meikyokai, Chigusakai). Kengo Kuma and Associates designed the plaza, ensuring it harmoniously blended with the lush natural environment of the University's campus. It will be both a facility for international exchanges and a "Dosokai Commons" for alumnae/alumni associations to hold various events and activities. Hisao & Hiroko TAKI PLAZA is expected to become a new symbol of Ochanomizu University, and hub of activity for past and present students and teaching staff.



Hisao & Hiroko TAKI PLAZA (Exterior)



Hisao & Hiroko TAKI PLAZA (Interior)

Library

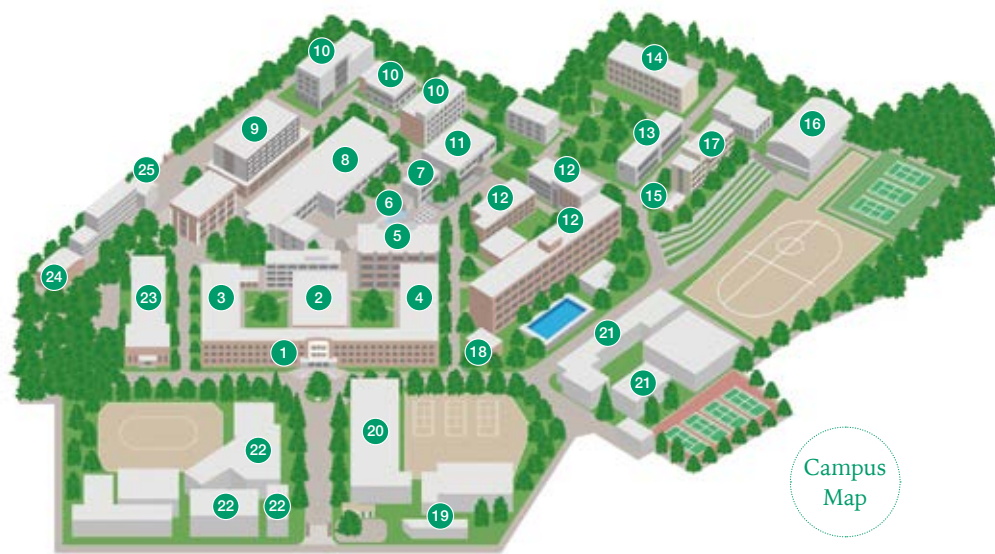
The university library stores around 700,000 books in total from general textbooks to academic and specialist documents and materials including 11,000 electronic journals, learning and audiovisual materials for language study, gender research and child education materials, and other valuable materials only found at Ochanomizu University. After renovations were carried out in 2017 to expand and upgrade it, the new library reopened in April 2018. The first floor Learning Commons is a place for students to relax and hold group discussions and study sessions, while the quieter second floor Learning Area is for browsing materials and private study. The library is a place where students can study and develop together without time and space restrictions.



Library (Exterior)



Library (Interior)



- | | | |
|--|--|--|
| 1 Main Building | 10 Inter-Faculty Building 1~3 | 19 Hisao & Hiroko TAKI PLAZA |
| 2 Kiindo Auditorium | 11 Cafeteria | 20 High School Building |
| 3 History Museum | 12 Faculty of Science, Building 1~3 | 21 Junior High School Building 1~2 |
| 4 Faculty of Human Life and Environmental Sciences | 13 Student Commons | 22 Elementary School Buildings 1~3 |
| 5 Comprehensive Research Building | 14 Faculty of Letters & Education, Building 2 | 23 Kindergarten |
| 6 Pergola | 15 Tea House (Houkou-an) | 24 Izumi Nursery |
| 7 Health Care Center | 16 University Gymnasium | 25 Bunkyo-ku Municipal Ochanomizu University Center for Early Childhood Education and Care |
| 8 University Library | 17 Graduate School of Humanities & Sciences/ University Innovation Research Building | |
| 9 Faculty of Letters & Education, Building 1 | 18 Radioisotope Research Center | |



1 Main building

The main gate, auditorium, and kindergarten buildings are all historical buildings designated as Registered Tangible Cultural Property. These are valuable memorials that give us a taste of the architectural design typical in the early Showa period as characterized by the tops of the parapet formed with curves in the expressionist style, the two multiple windows on the left and right with white window sills, and the animal-patterned relief in the front.



2 Kiindo Auditorium

The auditorium was built the same year as the university main building with an integrated structure. The building organically links daily education and research with opportunities for people learning, researching and working on the school grounds together. The auditorium is known as "Kiindo," and this name is engraved on a plaque that still hangs on the stage.

[Affiliated schools]

The Ochanomizu University campus also has an affiliated senior high school, junior high school, elementary school, kindergarten, nursery and childhood education and care center.



Ochanomizu University Senior High School

Ochanomizu University Senior High School was established in affiliation with then Tokyo Women's Higher Normal School in 1882. It is the only girls' school affiliated with a national university, with three classes in each grade, totaling nine classes. It takes full advantage of its characteristics as a senior high school affiliated with Ochanomizu University, to raise highly educated women who can contribute to society.



Ochanomizu University Junior High School

Ochanomizu University Junior High School was established as Tokyo Women's Higher Normal School Junior High School in 1947, becoming a separate school from Tokyo Women's Higher Normal School Senior High School under the reform of the educational system. Now it has three normal classes and one class for "returnee students" in each grade, totaling twelve classes. New educational research and development is under way in a very fulfilling environment there.



Ochanomizu University Elementary School

Ochanomizu University Elementary School was established as Tokyo Women's Higher Normal School Experimental Elementary School in 1878. Its educational objective has always been "autonomy and cooperation" since its founding. It has three classes in the first to third grades, and four classes, including an additional class for returnee pupils, in the fourth to sixth grades.



Ochanomizu University Kindergarten

Ochanomizu University Kindergarten was established in affiliation with the Tokyo Women's Higher Normal School in 1876, as the first national kindergarten in Japan. In 2008, the school building was designated as a Registered Tangible Cultural Property. With its naturally undulating outdoor play area and peaceful location surrounded by the warmth of trees, the Kindergarten encourages the growth of proactive children who interact with lush natural environment around them.



Izumi Nursery

The Izumi Nursery is a childcare facility for full-time and part-time teaching staff and students, who have children aged from six months to two years. Children have ample opportunity to encounter people and things in the University's natural environment, thereby fostering their healthy cognitive development. The nursery also provides opportunities for the children to interact with and learn from students.



Bunkyo-ku Municipal Ochanomizu University Center for Early Childhood Education and Care

Bunkyo Ward in Tokyo has assigned the running of this Center to Ochanomizu University. It opened in April 2016 with the aim of putting back into society the practical applications and findings of the University's research into education, and to eliminate any waiting lists for children to enter childcare facilities or schools. Focusing on the five connected areas of play, people, family, community, and the earth, it actively illustrates by example the way forward for certified childhood education and care facilities.