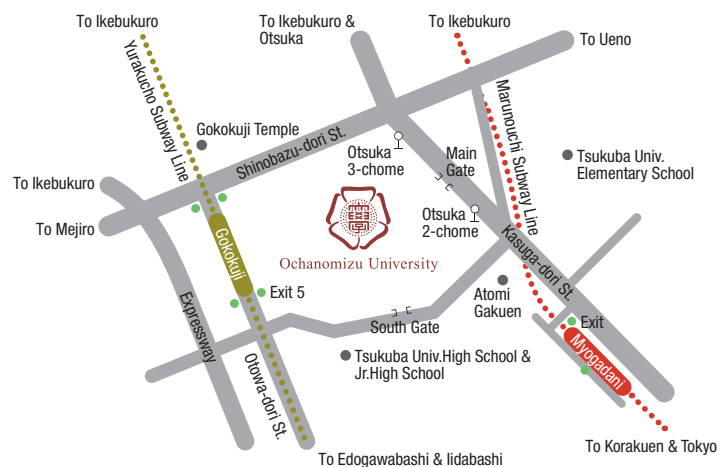
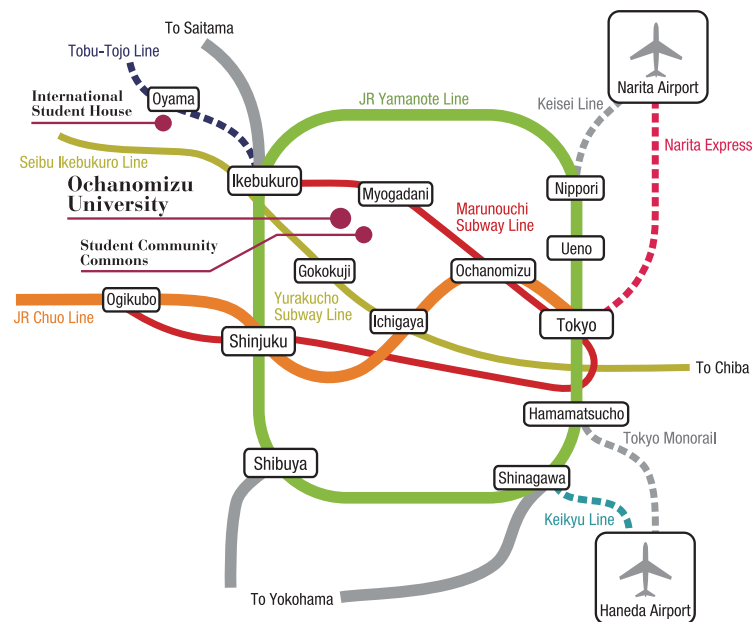


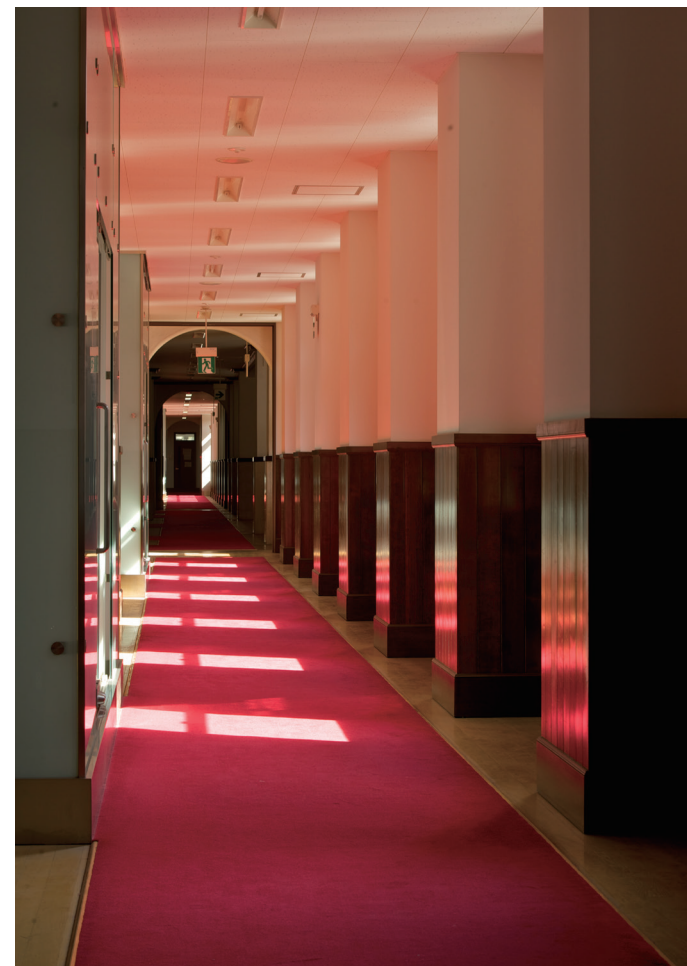
Transport guide



- 7-minute walk from Myogadani Station on the Tokyo Metro Marunouchi Subway Line
- 8-minute walk from Gokokuji Station on the Tokyo Metro Yurakucho Subway Line
- 1-minute walk from Otsuka 2-chome Bus Stop (Toei Bus)



Ochanomizu University



OVERVIEW 2017-2018



Ochanomizu University

2-1-1 Otsuka, Bunkyo-ku, Tokyo, Japan 112-8610
TEL. +81-3-5978-5105 FAX. +81-3-5978-5545 <http://www.ocha.ac.jp/>

Ochanomizu University's History

Ochanomizu University was established in 1875 as Tokyo Women's Normal School, in Ochanomizu (now Yushima, Bunkyo-ku, Tokyo). Since its founding, Ochanomizu University has educated many eminent researchers and educators, including Tetsu Yasui, the president of Tokyo Woman's Christian University, Kono Yasui, the first Japanese woman to earn a doctorate in science, and Toshiko Yuasa, the internationally renowned physicist.

Ochanomizu University was established as a women's university in 1949 as part of the post-war school reforms. The following year, the University launched a new system consisting of a Faculty of Letters and Education, a Faculty of Science, and a Faculty of Home Economics (now the Faculty of Human Life and Environmental Sciences). Subsequently, a graduate school was established in 1963, followed by a doctoral program in 1976, as the University established its educational and research foundations while continuously expanding and developing.

Ochanomizu University celebrated the 140th anniversary of its founding in 2015. Just as it has up until this point, it will continue to serve as a pioneer in educating women who lead the way in every era.

1874	The government establishes Women's Normal School in Tokyo, Japan's first institute of higher education for women
1875	The school opens in Ochanomizu (now Yushima 1-chome, Bunkyo-ku, Tokyo)
1908	The name changes to Tokyo Women's Higher Normal School with the establishment of the Nara Women's Higher Normal School
1923	The school buildings were destroyed in fires caused by the Great Kanto Earthquake. The school moves to new buildings at the present location (Otsuka 2-chome, Bunkyo-ku, Tokyo)
1949	Ochanomizu University was established
1963	The Graduate School of Home Economics (master's program) was established
1964	The Graduate School of Science (master's program) was established
1966	The Graduate School of Liberal Arts and Humanities (master's program) was established
1976	The Graduate School of Humanities and Science (doctoral program) established
1997	The Graduate School of Liberal Arts and Humanities, Sciences, and Home Economics (master's programs) was reorganized as the Graduate School of Humanities and Science (master's program)
2004	Ochanomizu University becomes a national university corporation under the National University Corporation Law
2007	The Graduate School of Humanities and Sciences was reorganized as the Graduate Courses in Humanities and Sciences



The University's front gate



Kiindo lecture hall



A Panoramic view of school buildings prior to the Great Kanto Earthquake

Greeting

Ochanomizu University, established in 1875 as Japan's first national higher educational institution for women, celebrated the 140th anniversary of its founding in 2015. Over this period, the University has been a pioneer at the forefront of education for all women who are motivated to learn and want to contribute to society. Many of our graduates have produced outstanding results domestically and internationally in various disciplines, including academic research, education, industry, public administration, and journalism.

Today, the University is working to train women to gain a broad perspective and sensitivity who, in response to the needs of society, will be able to work for the future of the world.

In 2004, Ochanomizu University articulated its mission to "be a place where all women who are motivated to learn can realize their earnest dreams" when it became a national university corporation. Thus, the University aims to support the realization of the dreams for such women, and up to the present day, we have developed programs to support the growth and development of qualities and capabilities for women, regardless of their nationality and age, including women in developing countries who are motivated to learn but may lack opportunity to study.

The University has subsequently created a distinctive system of education that includes liberal arts education, global education, and leadership education to provide an arena of self-improvement that enables women to learn what needs to be done for the good of the world and humanity. It is our hope that, through such experiences, those who study at our University will acquire: (1) the ability to be aware of complex and diverse social issues and reflect on methods of exploration and problem-solving from their respective specialist viewpoints; (2) the ability to profoundly understand people from diverse cultures who have different values and philosophies, while enjoying friendly competition at the same time as personal growth; and (3) the ability to achieve cooperation with a diverse range of people from around the world through comprehensive and practical "wisdom" without forgetting about consideration for others.

Ochanomizu University will continue to play a role for years to come as a higher educational institution that enables women to realize their respective dreams and create prosperous futures while also encouraging them to be women of action who evoke hope and courage for the future in their colleagues and the broader society.

Kimiko Murofushi

Kimiko Murofushi, Ph.D.
President, Ochanomizu University



Ochanomizu University's mission, vision and strategy

Raise female leaders who can respond to the different needs of the times and society and who can make an impact on the global stage, by providing learning opportunities to help promote international research, create educational cultures, and realize women's dreams.

The above is the mission of Ochanomizu University as a national women's university. In order to achieve this mission, we uphold the following visions during the period of our third medium-term goals (from 2016 to 2021) and promote various strategic measures in such fields as education, research and social contribution.

(Vision 1)

Raising global female leaders with a high level of specialization, an insight with sound judgment, and a tolerance of diversity

(Vision 2)

Creating an invigorating social environment through research and development for life-long health and spiritual wellbeing



Education reform

(to raise global female leaders with a high level of specialization)

Introduction of learning tracks integrating the master's program and doctoral program

An educational system that integrates the master's program and doctoral program, together with our ongoing "Liberal Arts in the 21st Century" program and "Multiple Program Elective Course" system, helps raise global female leaders.

Raising female leaders in the fields of science and technology

We have adopted a five-year educational system that integrates the master's program and doctoral program in order to foster long-term innovation by female leaders. Also, a new joint doctoral program in Cooperative Major in Human Centered Engineering was established in 2016.

Educational quality assurance system

This includes the formation of comparative IR (Institutional Research) on learning and teaching practice, the development of a learning portfolio that integrates senior high school, university, and graduate school.

Research Promotion

(formation of international educational research bases in competitive and distinctive fields)

Research Organization for Global Female Leader Development

Raise female leaders capable of performing on the global stage through educational research that helps promote women's leadership and gender equality.

Organization for Human Life Innovation and Development

Create innovation designed to promote physical and mental health and living environments in line with human "body" and "mind" development stages.

Internationalization

(Promoting international exchange with overseas universities and student exchange programs)

Improving educational environments for globalization

Increase the number of overseas partner universities, create a more flexible academic calendar in part by modifying the four-term system, offer more classes in foreign languages, and set up English-taught degree courses.

Contribution to international society

Implement support programs for the education of women and children in developing countries, and foster human resources for peacebuilding and international cooperation.

University administration

(Strengthening functionality through an "All Ochanomizu" system)

Strengthening financial footing

Establish "Future Exploration Fund." Promote active measures to attract external funds.

Improving campus functionality

Realize an attractive campus based on "Campus Master Plan".

Enlarge and renovate the University Library. Create sites for international exchange and interaction with society.

Social contribution

(contribution to society by making use of educational research outcomes)

Promotion of lifelong education

Hold "Ochanomizu Business Leader Development Class" ("Kiin Juku") to help women to take their careers to the next level and increase the number of women in high-level positions.

Support for science education

Provide training for science teachers at, and send science teachers to elementary, junior high and senior high school, and hold open courses for the general public. Promote measures designed to increase the number of female science students.

Provide early childhood education and childcare services

Operate a nursery school, "The center for Early Childhood Education and Care," in partnership with Bunkyo-ku, in order to return to society the fruits of our education research activities on early childhood education and childcare, as well as to reduce the number of children waiting to get into nursery schools.

Support for regions damaged in earthquakes

Establish an education system that continues functioning even when struck by disasters, to disseminate and deploy science educational content to the disaster-stricken areas.

Ochanomizu University's unique baccalaureate degree program educates women with knowledge, insight, and tolerance

Ochanomizu University has developed a baccalaureate degree program that prepares women with specialized basic skills, giving them creativity and practical capacities. The “Liberal Arts in the 21st Century” program, which provides a deep and comprehensive understanding in the fields of humanities and natural and social sciences, was introduced under the liberal arts education program, while the “Multiple Program Elective Course” system, which grants students more independence, was adopted for specialized education. This is intended to give students the education and expertise required in the 21st century society and to develop female leaders with an independent spirit. Ochanomizu University is also focusing on raising human resources prepared to make an impact on the global stage.

Undergraduate Faculties

	Admission Capacity	Total
Letters and Education	202	808
Science	125	500
Human Life and Environmental Sciences	125	500



Liberal Arts in the 21st Century program

This program, primarily offered to first- and second-year students as part of their liberal arts education, is assembled from five themes that are the key to unlocking the modern world. The objective is to systematically help students develop outstanding communication and negotiation skills, a broad perspective, and the ability to make judgments in a changing world—all which are vital skills for supporting and ensuring the optimal utilization of a highly specialized education. This gives students a perspective that cuts across the humanities and sciences, and fosters fundamental skills that will support them in society.

Multiple Program Elective Course system

In this specialized education course, students systematically acquire expertise and the knowledge and techniques needed to exercise this skill. Students are given greater independence in building an academic program that is in line with their own objectives. By combining core programs, specialty programs, subprograms and interdisciplinary programs, students can not only delve into specialized areas, but can also extend their learning across multiple fields and take a more interdisciplinary approach.

Integrated education tracks for baccalaureate and master's degree programs

In the academic year of 2017, Ochanomizu University will introduce “integrated education tracks” (a curriculum that connects the baccalaureate degree programs and the master's degree programs in some divisions, in order to foster the sophisticated ability to think based on education and specialization that can meet the needs of society. Guidance on the integrated education tracks will be provided for the first and second-year undergraduate students, and the application and selection process will start for third-year undergraduate students who are interested or motivated to participate. Students selected for participation in the integrated education tracks can proactively take graduate level classes while still enrolled in the baccalaureate degree program. Students who are planning to advance to the master's program in the future can therefore take full advantage of this system to make their six years of campus life even more worthwhile.

“Women's power for the world”

Ochanomizu University offers foreign language courses under the ACT (Advanced Communication Training) Program, which aims to improve communication skills, interdisciplinary courses that are open to society, and other practical training courses, in order to develop women who think from a global perspective and are able to play an active role both domestically and overseas. These courses are designed to foster an international perspective, the ability to understand other cultures, and the ability to communicate.

The entire university is committed to promoting study abroad, as well as upgrading and expanding overseas fieldwork and internship opportunities, while offering a variety of workshops and a summer program for international students.

Graduate education to attain a high level of specialization and a panoramic perspective

The Graduate School of Humanities and Sciences pioneers new research fields that go beyond the specialties of humanities and the sciences in order to foster the creative capacity needed to carry out advanced, cutting-edge interdisciplinary research. The Graduate School has focused on educating female researchers since it was established, and it has produced many talented female researchers.

We are also considering adopting an educational system that integrates the master's program and doctoral program in order to give our students a greater panoramic perspective, to stimulate their creativity, and to foster leaders capable of performing on the global stage. Accordingly, we are pursuing a graduate education incorporating a wide range of education and research projects.

Humanities and Sciences

Master's Program	
Comparative Studies of Societies and Cultures	Japanese Language and Literature Asian Languages, Literatures, and Cultures English and French Languages, Literatures, and Cultures Applied Japanese Linguistics Philosophy History and Art History Culture and Historical Studies Dance Music
Human Developmental Sciences	Educational Science / Psychology Developmental and Clinical Psychology Applied Sociology / Child Studies
Gender and Social Sciences	Social and Family Policies Geography and Environmental Studies Gender and Development Studies
Life Sciences	Biological Sciences / Human Environmental Sciences Food and Nutritional Sciences / Genetic Counseling
Advanced Sciences	Mathematics / Physics Chemistry and Biochemistry Computer Science
Cooperative Major in Human Centered Engineering	

Doctoral Program	
Comparative Studies of Societies and Cultures	Japanese Studies from a Global Perspective Language, Literature, and Culture / Comparative Social Studies Arts and Representational Studies
Human Developmental Sciences	Educational Science / Psychology Developmental and Clinical Psychology Sociology and Social Policies / Child Studies
Interdisciplinary Gender Studies	Interdisciplinary Gender Studies
Life Sciences	Biological Sciences / Human Environmental Sciences Food and Nutritional Sciences / Genetic Counseling Disease Prevention Sciences
Advanced Sciences	Mathematics / Physics Chemistry and Biochemistry Computer / Science
Cooperative Major in Human Centered Engineering	

Research and education support programs at graduate school

We have a substantial scholarship program. In addition, we have supported students' research and education by establishing the affiliated Izumi Nursery School (see p. 18).

The curriculum includes subjects such as English academic writing and presentation skills that will prepare students for presentations at international seminars, career development, and global female leadership training. The career support programs are intended to provide an environment in which students can continue their research. These programs include the research fellow program, researcher program and Migakazuba researcher program.

Establishment of new joint doctoral program

in Cooperative Major in Human Centered Engineering

There is currently an extreme shortage of female human resources in science and engineering, and the development of women with advanced knowledge of science and engineering is a pressing challenge. Ochanomizu University and Nara Women's University have jointly established a new major in Cooperative Major in Human Centered Engineering in 2016. This major aims to develop human resources that will master a range of lifestyle-related issues based on an engineering methodology from the viewpoint of consumers to create a safe, secure, and prosperous society and consider lifestyles of the future.

The program will develop interdisciplinary human environmental engineering education and research through the promotion of engineering from a consumer perspective and a practice of manufacturing with a focus on people and living.

Leading Graduate Schools program selected in 2013

The program "Fostering Long-term Creativity and Innovation with Science and Technology Disciplines Based on the Ochanomizu Spirit 'Migakazuba' in the Next Generation of Global Leaders" aims at fostering female innovators in the fields of science and technology, where female representation is very low. Innovators should have high flexibility to accommodate rapidly changing social needs and to sustain the creativity demanded by society based on academic foundations such as physics, mathematics, and computer science.

Besides the major course, the students in this program take a minor course of science and technology for global leaders, which aims at reinforcing basic abilities, as well as encouraging innovation in the real world and leadership in a cross-functional environment by implementing "Project Based Team Study (PBTs)" as a key to the program.



Unique career design program giving students practical and vocational skills needed in the real world

[Career education]

This program develops competence (comprehensive capacity producing results in conjunction with knowledge and skills) in the three areas essential to extending learning at the University and creates a cornerstone for career design. Students practice project-based learning that addresses specific issues of social relevance, giving them a window through which to view the world.

Competencies in three fields



Acting mutually:
communication skills, knowledge and cognitive skills, ICT utilization skills

Acting autonomously:
self-management skills, planning and execution skills, sociability

Acting cooperatively:
relationship building skills, collaboration skills, leadership skills

[Support for job hunting]

The Student and Career Support Center provides students with school-wide support throughout their progress as students and in their job search in order to support them to succeed in today's competitive employment environment.

To address the diverse needs of students, the center runs a variety of events to assist with job hunting. This assistance includes career guidance, informal meetings with former students, joint information sessions, and workshops. In addition, expert career advisors offer counseling for all those who are job hunting.



Results in job searches in fiscal 2015

	Number of graduates	Number of students continuing education (percentage)	Number of students seeking work (percentage)	Number of students who have found work (percentage)	Other (percentage)
Letters and Education	221	37(17%)	173(78%)	166(96%)	18(8%)
Science	129	81(63%)	46(36%)	41(89%)	7(5%)
Human Life and Environmental Sciences	149	43(31%)	88(63%)	88(100%)	9(6%)
Total	490	161(33%)	307(63%)	295(96%)	34(7%)

Various scholarships provided by the University for financial support and learning encouragement

Ochanomizu University provides various types of scholarships as part of a financial support and learning encouragement for students. These scholarships carry no repayment obligation, including pre-admission scholarships and scholarships targeting those who have shown notable achievements in their respective fields.

Entire University			
	Name of Scholarship	Amount of Scholarship	Number of Grantees
Undergraduate Students	Migakazuba Scholarship (Pre-admission scholarship)	1st year 300,000 yen 2nd year 300,000 yen	25
	Undergraduate Scholastic Achievement Scholarship	100,000 yen	25
	Quinkai Scholarship	200,000 yen	4
	New Dormitory Resident Assistant Scholarship (SCC-RA Scholarship)	20,000 yen/month	4
Graduate Students	Quinkai Research Encouragement Award (Pre-admission scholarship)	200,000 yen	20
	Doctoral Program Research Encouragement Award (Pre-admission scholarship)	300,000 yen	10
	Chisae Nishikori Scholarship (Pre-admission scholarship)	500,000 yen	2
	Hiroko Takata Scholarship (Pre-admission scholarship)	300,000 yen	1 for each program
	Ochanomizu University 120th Anniversary Quinkai International Exchange Encouragement Award	Limited to 2,000,000 yen	1 or 2 1 or 2
Undergraduate / Graduate Students	Study Abroad Special Scholarship	Limited to the annual amount of tuition or half of it in Ochanomizu University	A few
	Study Abroad Support Scholarship	50,000 yen	120
	Fumi Tominaga Scholarship Fund	300,000 yen	1
	Childcare Assistance Scholarship	In principle, half of the nursery school fee	No restriction

Faculty/division, etc.		
Name of Scholarship	Amount of Scholarship	Number of Grantees
Yasui-Kuroda Scholarship Fund	30,000 yen	5
Clothing Science Scholarship Fund	100,000 yen	No restriction
Food Science Scholarship Fund	100,000 yen	A few
Home Management Scholarship Fund	100,000 yen	1 or 2
Graduate School Scholarship Fund	100,000 yen	1 or 2
Mayako Ikeda Memorial Scholarship Fund	100,000 yen	A few
Tadashi Ikeda Scholarship Fund	100,000 yen	A few
Toshiko Yuasa Special Researcher Scholarship Fund	250,000 yen	1
Mathematics Scholarship Fund	100,000 yen	1
Outstanding Student in Biology Scholarship Fund	20,000 yen	1
Global Studies for Intercultural Cooperation Scholarship Fund	20,000 yen	1 or 2
Department of Chemistry (Naomi Miyajima) Scholarship Fund	100,000 yen	2, 2 and 1 respectively
Department of Biology (Eiko Konuma) Scholarship Fund	Up to 500,000 yen	1
Kazuko Takemura Overseas Training Scholarship Fund	1st year 2,000,000 yen 2nd year 1,000,000 yen	1
Kazuko Takemura Scholarship Fund	50,000 yen	1
Satoko Kan Scholarship Fund	250,000 yen	1 or 2
Yoshisada Yabe and Aiko Yabe Scholarship Fund	500,000 yen	3 for botany and mathematics respectively
Physical Geography Scholarship Fund	10,000 yen for domestic research or 30,000 yen for overseas research	3

Research promotion by strategic organizations integrating competitive and distinctive fields

Ochanomizu University has established two new organizations working to promote greater research, namely the “Research Organization for the promotion of Global Women’s Leadership” and “Organization for Human Life Innovation and Development” as a step toward realizing the visions for our third medium-term goals and plans. These two organizations consist of two institutes that promote distinctive research.

Research Organization for the promotion of Global Women’s Leadership

Formation of international educational research bases to raise global female leaders

Invite domestic and overseas female researchers, and raise female leaders capable of performing on the global stage through research and education that contribute to the promotion of female leadership and gender equality.

Research content

Expansion of the international network

- Invite overseas female researchers with achievements in priority areas for research and fundamentally reinforce research and education functionality
- Expand collaboration with domestic and overseas organizations to function as a bridge between Japan and the world

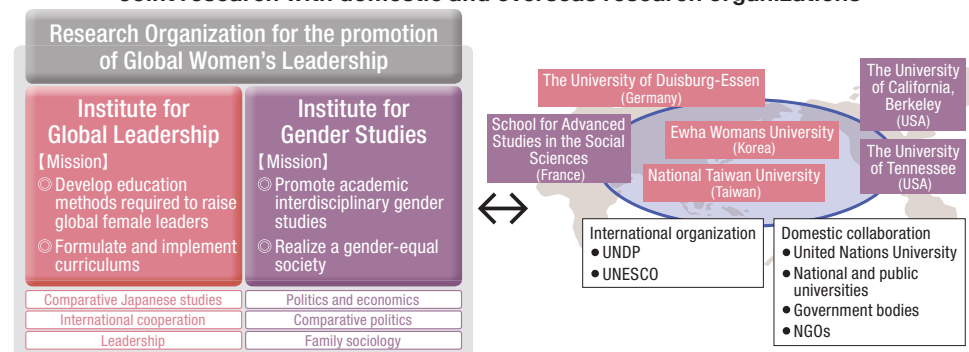
Disseminate a new view of global female leadership

- Promote international joint research related to priority areas for research
- Propose a “New Asian View of Leadership”
- Construct a “New Global Female Leadership Theory”

Practice of leadership education

- Develop “Leadership Education Performance Index” to provide feedback to the practice of education.

Joint research with domestic and overseas research organizations



First “Special Tanner Lecture” in Japan

Ochanomizu University, highly praised for its efforts to raise global female leaders, had the honor of becoming the first Japanese university to hold a “Tanner Lecture”, which are only hosted by the world’s leading universities, including Harvard University (USA). The lecture on women’s leadership was delivered on 18 May, 2016, attracting an audience of more than 1,200.



Organization for Human Life Innovation and Development

Formation of international educational research bases in the fields of health science and human developmental sciences

Disseminate the fruits of research to society in order to create innovation designed to bring lifelong physical and mental wellbeing and improve living environments, transform Japan into a healthy and vibrant country, and reduce the burden on future generations.

Research content

Research and development for maintaining and improving physical and mental health from infants and preschool children to elderly people

- Research and development that helps promote health in terms of nutrition intake, eating habits, exercise and artistic activities.
- Prevention and improvement of stress disorders and the locomotive syndrome

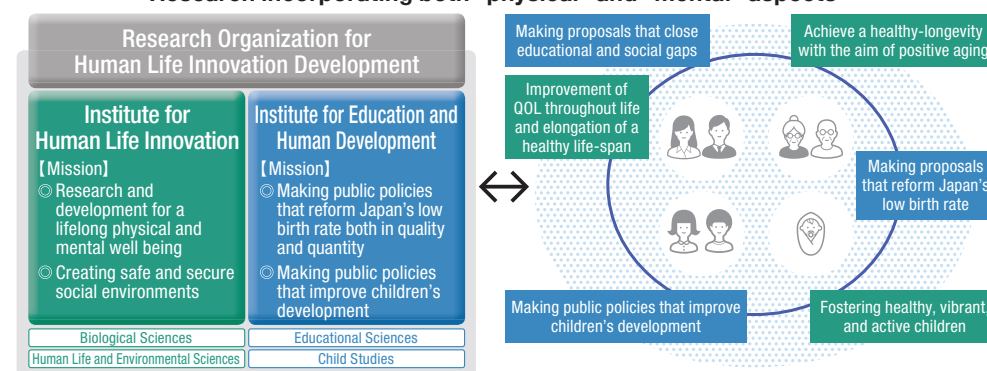
Conducting research and developing education curriculums that aim to enhance the quality of childcare and close educational gaps

- Studies on childcare environments and educational gaps, and long-term follow-up studies related to child-rearing environments and child development
- Studies related to parenting and work-life balance
- Studies related to social gaps for people in their middle and old ages

Development of “Health Support and Education Program” and practical studies

- Develop different programs based on age levels in the three fields of developmental disabilities, stress disorders, and lifestyle-related diseases.

Research incorporating both “physical” and “mental” aspects



Other centers supporting education and research

Headquarters for Campus Educational System Reform			Center for Institutional Research, Educational Development, and Learning Support Center for Foreign Language Education Leading Graduate School Promotion Center
Headquarters for International Affairs			Center for International Education Global Collaboration Center
Headquarters for Research, Outreach and Intellectual Property	Research Advancement Division	Education and Research Department	Center for Soft Matter Physics Center for Simulation Sciences and Informational Biology
		Infrastructure Department	IT Center Center for Instrumental Analysis Radioisotope Research Center Institute of Experimental Animals
	Social Collaboration Division		Marine and Coastal Research Center Science & Education Center Life-World Watch Center
	Intellectual Property Department		Center for Intellectual Property
	Headquarters for Promoting Global Human Resource Development and Gender Equality		

Deepening ties with universities around the world through student exchange agreements

University offers student exchange programs, foreign language training and many overseas visit programs, and supports overseas studies at the University's partner universities.

Partner universities : 71 in 25 countries and regions
(as of December 2016)

Region	countries and regions	partner universities
Asia	6	26
Middle East	1	1
Africa	1	2
North America	2	10
South America	1	1
Oceania	2	3
Europe	12	28
Total	25	71



Overseas language and other programs

- Monash University (Australia)
- University of Otago (New Zealand)
- University of Hull (UK)
- The University of Manchester (UK)
- Ewha Womans University (Korea)
- Sookmyung Women's University (Korea) and others

Accepting international students from around the world

Ochanomizu University accepts students from all over the world, primarily graduate students, including exchange students from its partner universities.

Number of international students by home country and region: 29 countries and regions (as of May 1, 2016)

Region	Undergrads	Grads	Research Students (Undergrads)	Research Students (Grads)	Exchange Students (Undergrads and Grads)	Japanese studies students	Total
Asia	12	126	24	4	2	21	189
Middle East	0	0	0	2	1	1	7
Africa	0	0	0	1	0	0	1
North America	0	0	0	0	1	0	1
South America	0	0	0	0	0	0	0
Oceania	0	0	0	0	0	1	1
Europe	2	8	0	0	2	9	21
Total	14	137	24	7	6	32	220

Support programs and events for international students

- Tuition exemptions and postponement system
- Personal tutors
- Dorm mentors
- Tutors at consultation rooms
- International Day
- Summer Programs
- Japanese culture classes
- Kabuki appreciation classes
- International Festival Night



Wide-ranging interaction in Japan

Academic cooperation agreements with Japanese universities

Ochanomizu University not only has agreements to transfer and accept credits from other universities, but also exchanges professors with several universities. The University is confident that such exchanges will train students to have a broad perspective and improve their motivation to learn.

Academic cooperation agreements with 22 Japanese universities

- Nara Women's University
- Tokyo Institute of Technology
- The University of Tokyo
- The Graduate University for Advanced Studies
- Japan Women's University
- Nagoya City University
- Tokyo University of the Arts
- Chuo University
- Kyoritsu Women's University
- Tokyo Women's Medical University
- Tokyo University of Foreign Studies
- Tokyo Medical and Dental University
- Tokyo Metropolitan University
- Gakushuin University
- Kitasato University
- Tokyo University of Marine Science and Technology
- Hitotsubashi University
- University of Tsukuba
- Shibaura Institute of Technology
- Keio University
- INSTITUTE of INFORMATION SECURITY
- WASEDA University

As of March, 2017 (in order of date on which agreement was signed)

Community interaction

Ochanomizu University hosts public lectures for community residents and also provides educational support and assistance with educational guidance to elementary, junior high, and high schools in the community. The University has also formed mutual cooperation agreements with Bunkyo and Kita wards, the neighboring municipalities. The University also has a mutual cooperation agreement with Tateyama City in Chiba, where the University's Marine and Coastal Research Center is located, and it cooperates with educational activities.

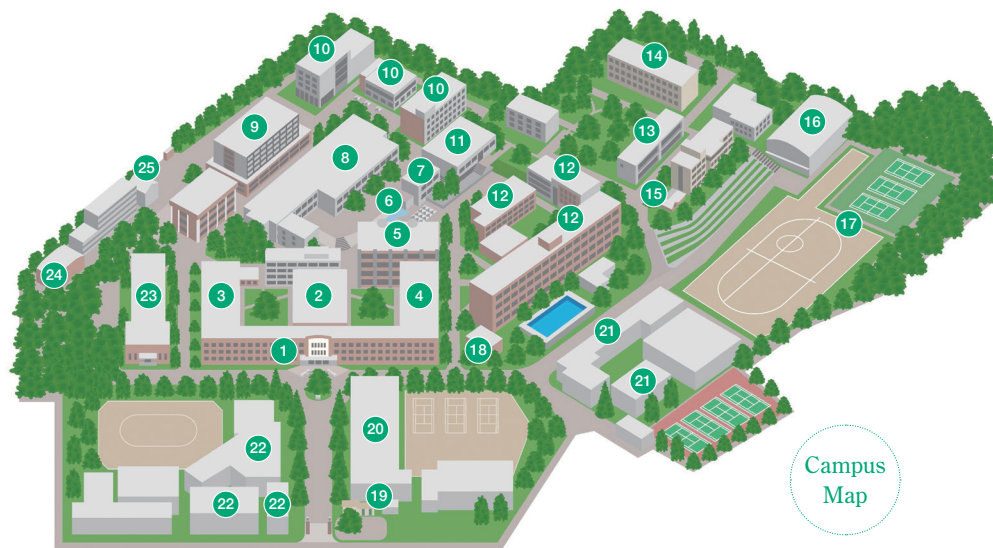
Support for reconstruction of regions damaged in earthquake

The University has made comprehensive partnership agreements to educate children and contribute to the restoration and development of the local communities with the school boards in prefectures, towns, and cities that were damaged in the Great East Japan Earthquake, such as Iwate Prefecture, and is continuing to work on a range of initiatives. In addition, a cooperation agreement has been formed with the Kesennuma City school board to work together to revitalize and develop education in Kesennuma. Furthermore, the University has been continuing to provide science learning assistance for the elementary and junior high schools damaged by the Kumamoto Earthquake.

Support for women

Ochanomizu University has formed a mutual cooperation agreement with Fukui Prefecture to train female leaders. To help Fukui Prefecture establish the Bright Future Program from fiscal 2012, the University used its expertise in training female leaders to help develop a program to help women working in companies in Fukui Prefecture to take their careers to the next level.

Also, in January 2017, the University and Bridgestone Corporation signed an agreement to help promote the fostering of female leaders.



- | | | |
|--|---|--|
| 1 Main Building | 10 Inter-Faculty Building 1~3 | 19 Ochadai Information plaza |
| 2 Kiindo Auditorium | 11 Cafeteria | 20 High School Building |
| 3 History Museum | 12 Faculty of Science, Building 1~3 | 21 Junior High School Building 1~2 |
| 4 Faculty of Human Life and Environmental Sciences | 13 Student Hall | 22 Elementary School Buildings 1~3 |
| 5 Comprehensive Research Building | 14 Faculty of Letters & Education, Building 2 | 23 Kindergarten |
| 6 Pergola | 15 Tea Ceremony House | 24 Izumi Nursery School |
| 7 Health Care Center | 16 University Gymnasium | 25 Bunkyo-ku Municipal Ochanomizu University Center for Early Childhood Education and Care |
| 8 University Library9 Faculty of Letters & Education, Building 1 | 17 Tennis court ground | |
| 9 Faculty of Letters & Education, Building 1 | 18 Radioisotope Research Center | |



1 Main university building

The main gate, auditorium, and kindergarten buildings are all historical buildings designated as Registered Tangible Cultural Property. These are valuable memorials that give us a taste of the architectural design typical in the early Showa period as characterized by the tops of the parapet formed with curves in the expressionist style, the two multiple windows on the left and right with white window sills, and the animal-patterned relief in the front.



2 Kiindo Auditorium

The auditorium was built the same year as the university main building with an integrated structure. The building organically links daily education and research with opportunities for people learning, researching and working on the school grounds together. The auditorium is known as "Kiindo," and this name is engraved on a plaque that still hangs on the stage.

[Affiliated schools]

A kindergarten, elementary school, junior high school, senior high school and nursery school are all housed on the same campus.



Ochanomizu University Senior High School

Ochanomizu University Senior High School was established in affiliation with then Tokyo Women's Higher Normal School in 1882. It is the only girls' school affiliated with a national university, with three classes in each grade, totaling nine classes. It takes full advantage of its characteristics as a senior high school affiliated with Ochanomizu University, to raise highly educated women who can contribute to society.



Ochanomizu University Junior High School

Ochanomizu University Junior High School was established as Tokyo Women's Higher Normal School Junior High School in 1947, becoming a separate school from Tokyo Women's Higher Normal School Senior High School under the reform of the educational system. Now it has three normal classes and one class for "returnee students" in each grade, totaling twelve classes. New educational research and development is under way in a very fulfilling environment there.



Ochanomizu University Elementary School

Ochanomizu University Elementary School was established as Tokyo Women's Higher Normal School Experimental Elementary School in 1878. Its educational objective has always been "autonomy and cooperation" since its founding. It has three classes in the first to third grades, and four classes, including an additional class for returnee pupils, in the fourth to sixth grades.



Ochanomizu University Kindergarten

Ochanomizu University Kindergarten was established in affiliation with then Tokyo Women's Higher Normal School in 1876. This was the first kindergarten in Japan. Its building was designated as a Registered Tangible Cultural Property. With a naturally undulating outdoor play area and its location in a peaceful setting surrounded by trees, the Kindergarten encourages children to grow through active interactions with the local environment.



Izumi Nursery School

Izumi Nursery School is open to female researchers and staff who have children aged from six months to three years' old as part of the University's benefit package. Children have ample opportunity to encounter people and things in the University's natural environment, thereby fostering their healthy cognitive development. The school also provides opportunities for the children to interact with and learn from students.

Commons - Spaces for “Being Together”



University Library “Learning Commons”

The Learning Commons on the first floor of the university library has a large number of computers and color printers that students can use freely, making the whole library a space for “learning together, growing together.”

The library will be extended and renovated into an even more attractive space and will reopen in 2018.



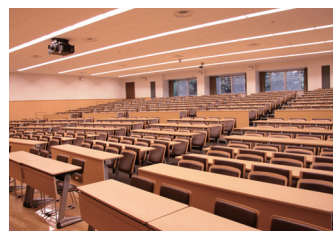
“Ochadai” Students Community Commons (SCC)

This is a room-share type student dormitory in which five students form a house and live together. Individual rooms ensure that the students still have privacy, but they share the kitchen, the bathroom, and living area. Study programs are also put together as a forum that is separate from the University, creating a space for “living together, growing together.”



Language Study Commons

The University is working to develop global human resources, and this is a space that supports the students and teaching staff in the study of foreign languages, one of the pillars in these efforts. To enable the students and teaching staff to study foreign languages autonomously and be able to reach out to people living all around the world through those languages, they can freely study language-learning materials of 52 of the world's languages in line with their individual objectives.



Interactive Commons

The Interactive Commons, nicknamed “Ocha-Hall,” is not just a space for lectures, but also a site for all kinds of intellectual exchange, starting with international exchange activities. The space is open for various purposes including seminars and workshops as well as classes.



Student Commons

Student Commons, newly established in February 2016, has a lounge and studios on the first floor, and a multi-purpose space for dancing and small-scale lectures, and a soundproof studio where students can play musical instruments and engage in voice training on the second floor. On the south side, there is a large open space surrounded by glass walls available for use by all the students and staff of the University.

Promoting gender equality across the University

Ochanomizu University established the Support Office for Women in April 2004, and the Office of Promoting Gender Equality in April 2011, as a forerunner in Japan to promote gender equality in the University's role as an educational and research institution. Under the leadership of the University's president, it pursues improvements to the working environments in education and research institutions. The support program for female researchers at Ochanomizu University is called the Career Opportunity Support Model from Ochanomizu Scientists (COSMOS), and it has a pervasive influence both within and outside the University.

Furthermore, Ochanomizu University considered and reviewed methods for creating working environments that would be conducive to performance in education and research institutions based on the achievements and expertise in developing female workers that the University has built up over more than 140 years since its founding. It has designed the “Ochadai” Index as a self-assessment indicator for the working environment. The COSMOS Work Book was also put together as a compendium of procedures for improving the working environment using the “Ochadai” Index, and it is shared not only throughout Japan, but also with overseas education and research institutions.

Ochanomizu University's initiatives have been widely praised in Japan and abroad, and the University has received many inquiries and visitors from outside organizations.

Raising female leaders on the principles of thoughtfulness, intellect and flexibility, and promoting diversity



Ochanomizu University's 141 years of achievements in higher education for women fuels its continuing effort to develop female leaders. In 2008, the University established the “Migakazuba Bible”, based on the school song, “Migakazuba”, to lay out the principles behind its leadership education. This is part of the development of the unique “Ochadai” model of leadership education. In 2014, the University established the lifelong learning course, “Ochanomizu Business Leader Development Class” (“Kiin Juku”) for women who aim to work in management positions.

Starting in fiscal 2010, Ochanomizu University began providing support to university researchers and their spouses during maternity/childcare leave, as well as to researchers caring for or nursing family members so that they can embrace a diverse range of work styles.

The University will continue to provide a working environment where diversity is valued, and propose a new model of work-life balance for the 21st century.

Education from childhood to graduate school on a single campus

Ochanomizu University houses a kindergarten, elementary school, junior high school, senior high school, university and graduate school, all on a single campus. We are also the first national university corporation to have an affiliated nursery school (Izumi Nursery School) and employee housing within the school.

In fiscal 2016, the University opened the first early childhood center certified by a Tokyo ward, The Bunkyo-ku Municipal Ochanomizu University Center for Early Childhood Education and Care, in order to return to society the fruits of our education research activities on early childhood education and childcare, as well as to reduce the number of children waiting to get into nursery schools.

The University provides an environment oriented to women's lifestyles so they can balance childcare with study, research, education and work to achieve a work-life equilibrium.



Izumi Nursery School